



Global Cannabis Applications Corporation

Your trusted data source for all things cannabis.

# FORWARD LOOKING STATEMENTS

This Presentation (together with any supplements and any other information that may be furnished to prospective investors by **Global Cannabis Applications Corp.** ("**Global Cannabis**" or "**Global Cannabis Applications**") contains "forward-looking statements" or "forward-looking information" within the meaning of applicable securities laws (collectively "Forward-looking Information").

Forward-looking Information is generally identifiable by the use of the words:

**"believes", "may", "plans", "will", "anticipates", "intends", "budgets", "could", "estimates", "expects", "forecasts", "projects"** and similar expressions, and the negatives of such expressions.

Forward-looking Information in this Presentation includes, but is not limited to, statements concerning economic trends, the size of the market, the timing and scope of Global Cannabis Applications capital expenditures, the anticipated use of proceeds, financial forecasts, and the proposed ownership allocation.

Global Cannabis Applications has based this Forward-looking Information on factors and assumptions about future events and financial trends that it believes may affect its financial condition, results of operations, business strategy and financial needs, including the ability of Global Cannabis Applications to generate cash flow from operations and obtain necessary financing on acceptable terms, general economic, financial market, regulatory and political conditions in which Global Cannabis Applications operates, consumer interest in Global Cannabis Applications products, competitions, anticipated costs, government regulation of Global Cannabis Applications activities and products and in areas of taxation and environmental protection, the timely receipt of any required regulatory approvals, and Global Cannabis Applications ability to obtain qualified staff, equipment and services in a timely and cost efficient manner.

While Global Cannabis Applications considers these assumptions to be reasonable, these assumptions are inherently subject to significant uncertainties and contingencies. Additionally, there are known and unknown risk factors which could cause Global Cannabis Applications actual results, performance or achievements to be materially different from any future results, performance or achievements expressed or implied by the forward-looking information contained herein. Known risk factors include, among others, regulatory risks, the lack of a public market for the securities of Global Cannabis Applications, the limited operating history and financial track record of Global Cannabis Applications and the uncertainty as to revenues, reliance on key personnel, product liability, unfavorable publicity, management of growth and the difficulty in forecasting.

# CORPORATE SUMMARY

## VISION

Citizen Green technologies to become the leading trusted source for all things cannabis.

## MISSION

To bring an end-to-end blockchain data solution to cannabis health sciences that:

- aggregates medical cannabis data,
- attracts patients, doctors, dispensaries, licensed producers and regulators as partners and customers,
- provides superior data to a growing market.

CORPORATE	INFORMATION
Head office	Vancouver, BC
Satellite offices	Lithuania, Australia, India, Israel
CSE	APP
FSE	2FA
OTCQB	FUAPF
Shares issued	60,366,501
Recent price	\$0.40
Market capitalization	\$24,146,600
Average daily volume (3 mons)	+2,124,000

# INVESTMENT HIGHLIGHTS

- Huge and growing market opportunity
  - multi-billion-dollar market phenomenon,
  - multiple jurisdictions around the world have legalized or are moving toward legalization of medical use including Australia, Canada, Chile, Colombia, Czech Republic, Israel, Mexico and 30 U.S. states.
- Total lack of trusted cannabis related information.
- Partnerships with leading sources of consumer and medical data.



- Secure platform and database based within a blockchain environment to collect, store and sell data with token economy.
- Artificial intelligence module to leverage and process data.
- Management team and advisors with a successful track record and expertise in cannabis and token economies.

---

# MANAGEMENT & DIRECTORS

## BRAD MOORE

CEO & Director

20 years of practical business leadership experience with Fortune 500 companies.

Strong background with internet-based start-up corporations.

Proven track record restructuring and developing early-stage businesses.

Holds an MBA from Royal Roads University.

## ALEXANDER HELMEL

CFO & Director

12 years experience in the Canadian capital markets.

Over 20 years within the Information Technology sector.

Specializes in developing corporate growth strategies, building senior management teams, and developing corporate assets.

Intimate knowledge of internal control strategies and corporate governance guidelines.

BSc. (Mathematics), Certified Information Systems Auditor (CISA) 2006.

## EYAL MARGALIT

CTO

Over 20 years of experience in building technology companies.

Two of the companies he founded and led accomplished significant exits.

Vast experience in all aspects of technology development management and the translation of tech to business.

Strong understanding of the medical cannabis space with a focus on R&D.

## HANAN GELBENDORF

CMO

Over 20 years of global marketing experience, in agency setting as well as in corporate America.

Vast experience and proven record of delivering results for early stage businesses and established F500 companies.

Specializes in Leading all the aspects and processes of marketing.

Holds an MBA from the Smeal College of management at Penn State University.

## JEFFREY HAYZLETT

Director

Chairman of C-Suite Network, home of the world's most trusted network of C-Suite leaders, and a notable media personality.

CEO The Hayzlett Group.

TV & Radio host, Bloomberg Television & CBS Radio.

Global CMO at Eastman Kodak.

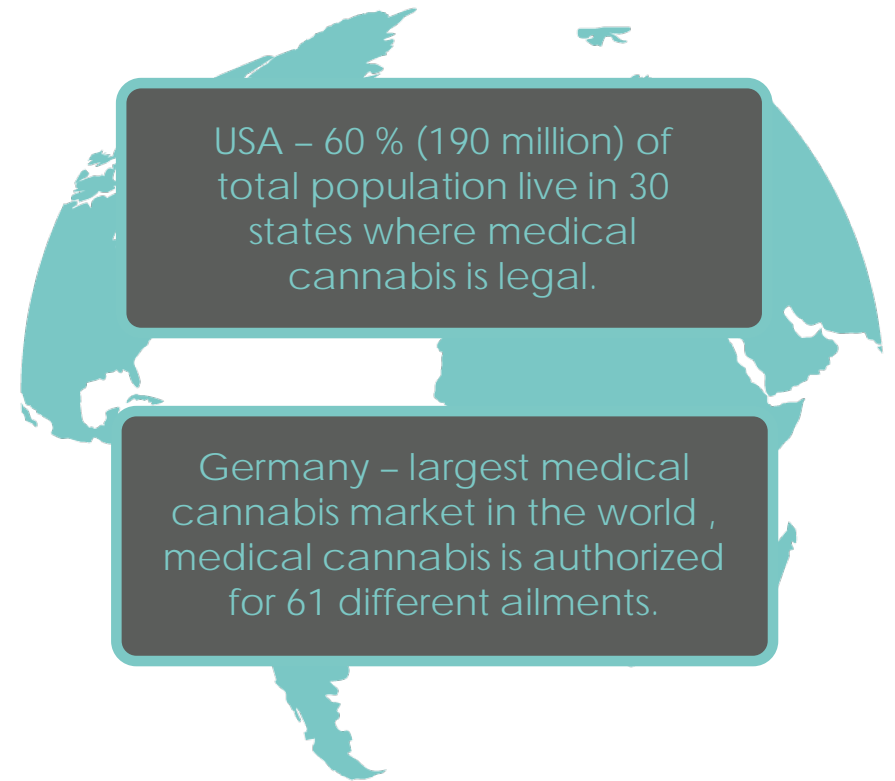
# ADVISORS

<p><b>Blaise Blatter, Regulatory Expert</b> Serves as Chief Development Officer of BuddingTech and is the GM of Medical Cannabis Counsel of Australia. Joined GCAC advisory board to assist government regulations.</p>	<p><b>Eugene Dubossarcky, Data Scientist</b> Holds a Ph.D. in Machine Learning (Neural Networks) and is the Chief Data Scientist at AlphaZetta, a global analytics consultancy.</p>	<p><b>Adolfo Gonzales, Medical Cannabis Advocate</b> Sought after practitioner, author and advocate of medical cannabis. Created the Cann Help Deck from ten plus years of data aggregated from medical cannabis users.</p>
<p><b>Antanas Gouga, ICO Expert</b> "Tony G", is a poker player, entrepreneur, politician and an expert in cryptocurrencies and blockchain. He is currently Lithuania's member of the European Parliament and a ICO special advisor to Bankera, one of the most successful ICOs on record.</p>	<p><b>Sheldon Inwentash, Venture Capitalist</b> Chairman and chief executive officer of ThreeD Capital Inc., a Toronto-based venture capital firm specializing in investments in blockchain, cryptocurrencies, A.I. and junior resources.</p>	<p><b>Sam Lee, ICO Expert</b> The founder and CEO of Blockchain Global Limited, which operates Australia's largest and most liquid bitcoin exchange (ACX). As an industry pioneer Sam has led bitcoin mining projects, cryptocurrency exchanges, investments and successful ICOs.</p>
<p><b>Adam Miller, Advisor</b> Founder of BuddingTech and the Medical Cannabis Counsel of Australia. Appointed to the board of directors of GCAC Australia.</p>	<p><b>Kim Oishi, Capital Market Strategist</b> Over 20 years of experience in financing and advising growth companies. Founder and President of Grand Rock Capital Inc., a company that invests in growth companies and provides investor relations, corporate finance, business development, M&amp;A services.</p>	<p><b>Simon Sorockyj, ICO Expert</b> Entrepreneurial tech lawyer with over 20yrs of experience in mobile apps, fintech, global payment systems and blockchain delivery. Will assist with the plan and design of ICO on token based loyalty program.</p>
<p><b>Anastasija Plonikova, Advisor</b> Has worked for Europol, Eurojust, and EU law firms. Consulted with the EU on cryptocurrency and blockchain regulatory adoption. Responsible for strategic partnerships to help grow the ETHlend ICO brand.</p>	<p><b>Scott Walker, Senior Mgmt. Consultant</b> Co-founder of Cannabis Canada Association, has over 25 years of experience as a lobbyist, contractor and consultant. Joined GCAC as special advisor.</p>	<p><b>Modestas Kaseliauskas, Advisor</b> Served as Director General of the State Tax Inspectorate in Lithuania from 2005-2014 and is responsible for tax compliance for GCAC Europe operations. Member of the Bankera ICO Advisory Board.</p>

# GROWING GLOBAL MARKETS

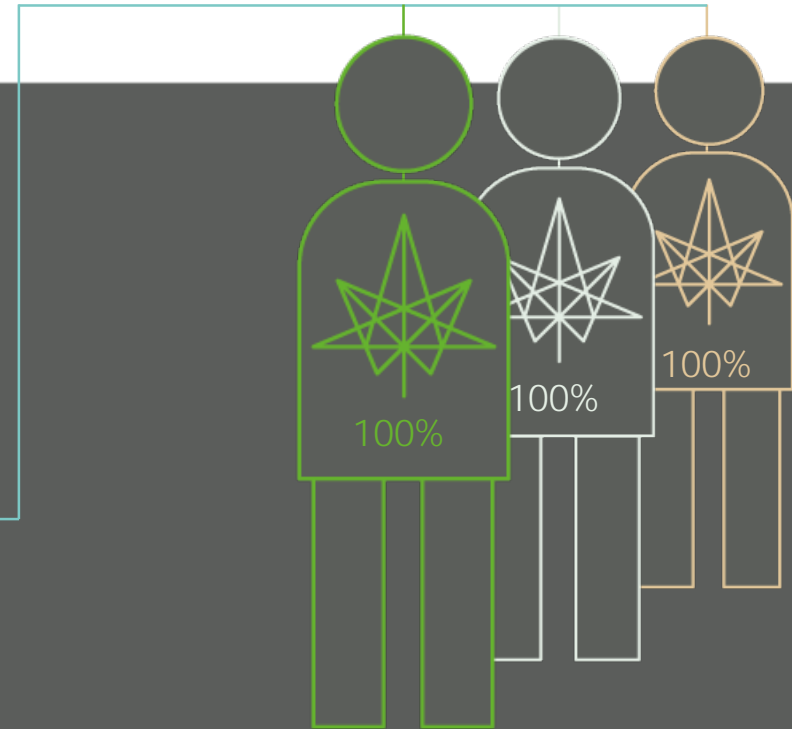
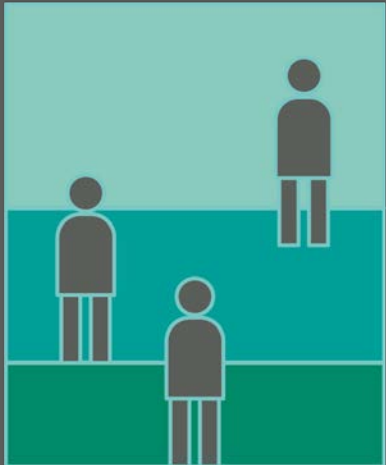
- The legal cannabis market is expected to grow to an annual global value of US\$31.4 billion by 2021 (*Brightfield Group - Forbes November 2017*)
- More and more jurisdictions are legalizing the use of medical cannabis joining Australia, Canada, Chile, Colombia, Czech Republic, Germany, Israel, Mexico and 30 U.S. states.
- The emerging medical cannabis markets are being slowed by fragmented ecosystem with a lack of clinical study level data, history of black market practices and largely operated on a cash basis.

**Lack of trusted data and info contributes to a lack of medical cannabis product and an inefficient approval process.**



# OUR 'PAIN TO STRAIN' SOLUTION

Citizen Green provides the trusted data that identifies the optimal match between medical cannabis products and ailments suffered by patients globally.





# CITIZEN GREEN TECH

## CITIZEN GREEN DATA STACK

Data is collected using a 'one ailment, one product' questionnaire methodology from: CG app inputs, Licensed Producers (LP) surveys, and Clinical Study results.

## CITIZEN GREEN AI

CG's proprietary algorithm & machine learning validates observational users' inputs and in-app behaviors against Clinical Study results and LP surveys. Through this process, predictive analysis can determine product efficacy for an ailment within a much larger sample size. All future inputs update the stack and the outputs become 'smarter'.



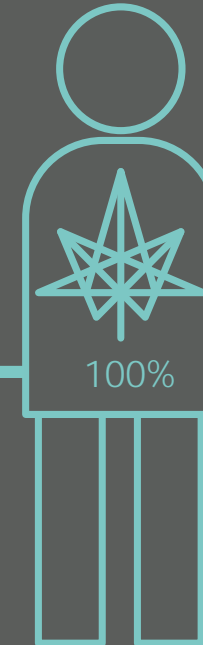
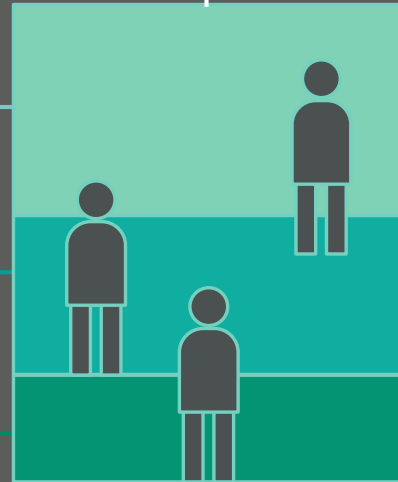
Observational app inputs



LP Patient Survey inputs



Clinical Study inputs



# CITIZEN GREEN TECH

## CITIZEN GREEN BLOCKCHAIN

All transactions happen within the environment of the CG Blockchain, ensuring security of data, transparency and trust worthiness of the analytics process. Each transaction is treated as a secure contract with the data result locked to the next transaction. The value of this data is stored in a utility token.

## CITIZEN GREEN COIN

CG Coins are a utility token and the key component to CG loyalty programs, both for users and canna retailers. Coins are earned in exchange for shared medical cannabis data, and are stored in the user's E-Wallet for redemption at partner retailers or for sale on crypto exchanges.



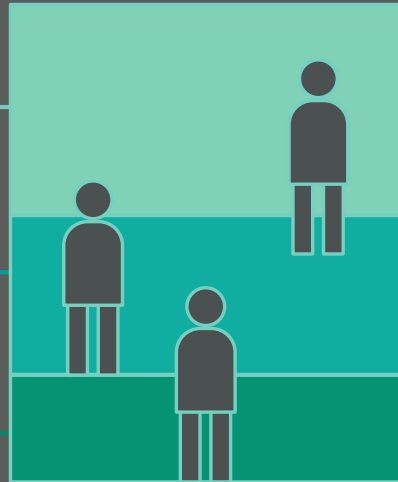
Observational app inputs



LP Patient Survey inputs

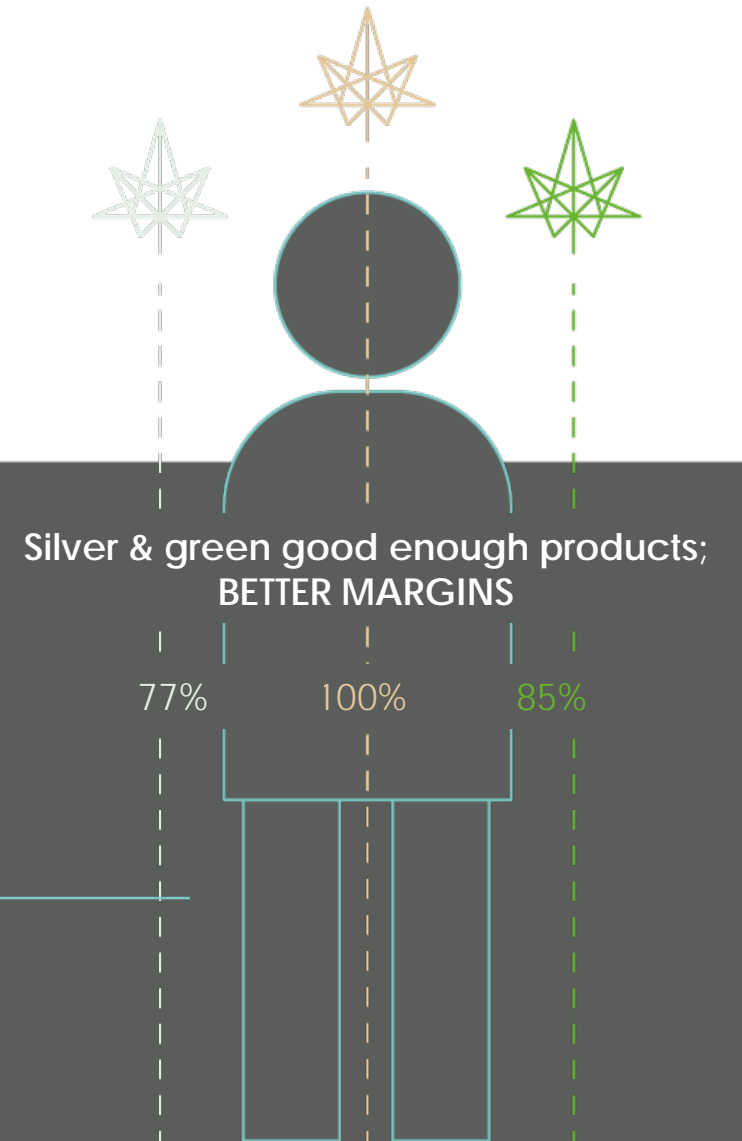
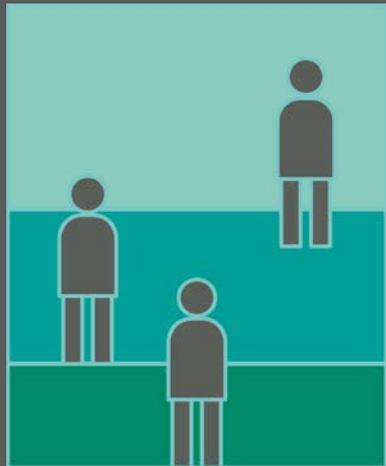


Clinical Study inputs



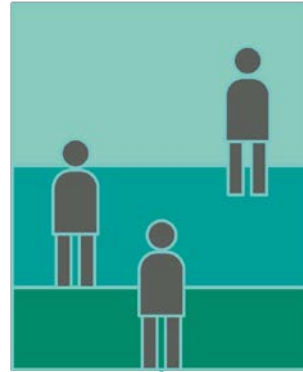
# THE ECONOMIC IMPACT

The wider the acceptable product/profile match threshold is, the higher the profit margins will be.



# REVENUE

Citizen Green Data Stack drives the following solutions leading to revenue:



CG Prescriber & Canna eHealth desktop solution integrated with a mobile app.

The solution makes product recommendations after consultation, based on patient inputs and products available.

This recommendation is pushed to the mobile device and the user tracks efficacy and side-effects.

This solution has an API that integrates into supply chain management of retailers and LPs

CG's Canna eHealth training for canna med professionals Training includes both onsite and e-learning covering; prescribing (i.e product efficacy, dosage, pharmacology, contraindications), product knowledge, 1-1 patient care and canna industry updates.

Users will have access to the CG CannaChatbot service on mobile & eplatform.

GCAC Canna Regulatory programs. Specialized teams comprised of the brightest minds in medical canna from structuring regulatory frameworks; cultivation, manufacturing, laboratory, and distribution standards; canna product expertise; and training programs for healthcare & retail professionals .

Each program is tailored to regional requirements.

Licensed Producers need the baseline of product efficiency to determine which product strains work best, cost effectiveness and product road map planning.

---

# MILESTONES

Launch



4Q 2017  
Citizen Green  
Apps

Publish



1Q 2018  
Whitepaper

500K



2Q 2018  
App users

60K



3Q 2018  
Canna Med  
Records

Approval



4Q 2018  
Crypto-bank Licence

\$30M



4Q 2018  
Investment  
Income

---

# CAPITAL STRUCTURE

## Share Structure

Issued and outstanding	60,366,501
Warrants	14,904,877
Options	4,820,000
Fully diluted	80,091,378



Global Cannabis Applications Corporation

---

Bringing advanced technology,  
blockchain and cryptocurrency  
to cannabis health sciences.

---

**Brad Moore**

bmoore@cannappscorp.com

+1 514 561 9091

---

**Kim Oishi**

koishi@grandrockcapital.com

+1 416 804 9228

---

Suite 830, 1100 Melville Street  
Vancouver, British Columbia, V6E 4A6

---

info@cannappscorp.com